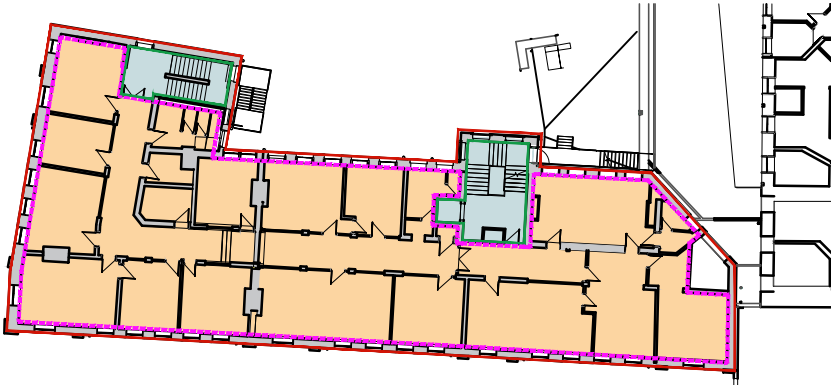


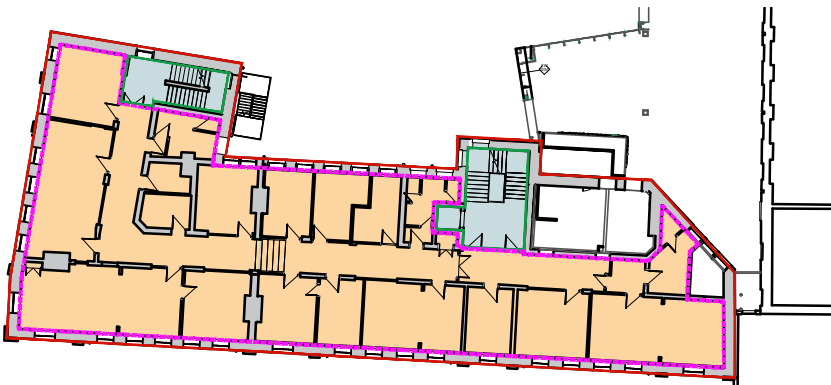
THIRD FLOOR

- Available floor space (GIA) = 318 sqm
- Existing room layout plan
- Shared access stairs and lift



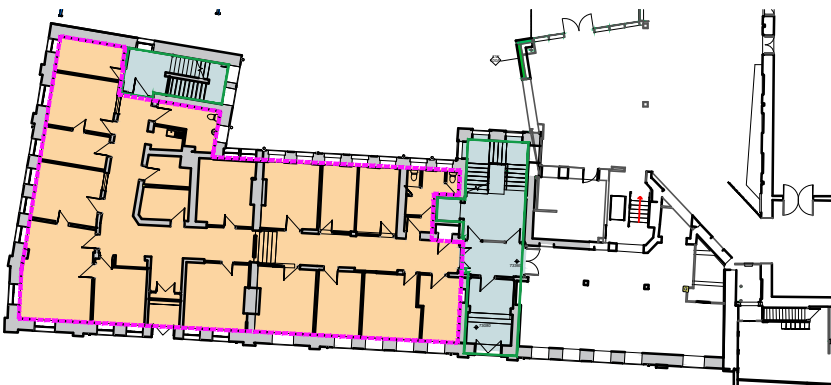
SECOND FLOOR

- Available floor space (GIA) = 542 sqm
- Existing room layout plan
- Shared access stairs and lift



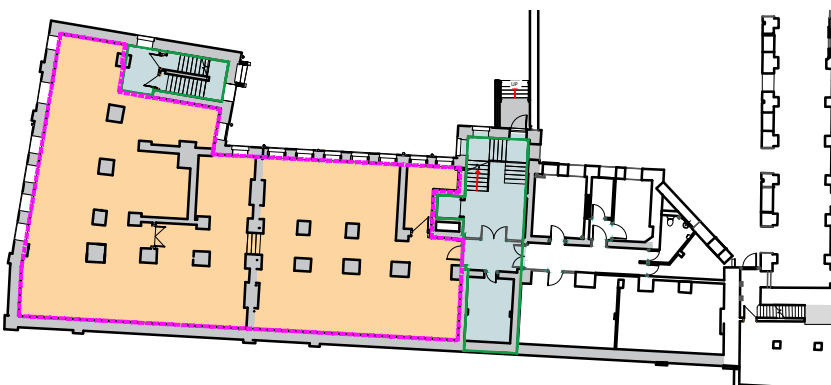
FIRST FLOOR

- Available floor space (GIA) = 499 sqm
- Existing room layout plan
- Shared access stairs and lift



UPPER GROUND FLOOR

- Available floor space (GIA) = 375 sqm
- Existing room layout plan
- Shared access stairs and lift



LOWER GROUND FLOOR

- Available floor space (GIA) = 375 sqm
- Existing room layout plan
- Shared access stairs and lift